

Open daily
10:00 a.m.–5:30 p.m.
Fridays and first Thursdays
10:00 a.m.–9:00 p.m.

Member Early Access
9:30–10:00 a.m.

MoMA WiFi 

Map

Fall 2019–
Spring 2020

Eat

The Modern and The Bar Room

Floor 1
A two-Michelin-starred
restaurant serving lunch
and dinner

Espresso Bar

Floor 2
Coffee, pastries, and light
refreshments

Café 2

Floor 2
Casual, family-friendly café
with sandwiches, salads,
pastas, wine, and beer

Terrace Café

The Carroll and Milton Petrie Terrace Café
Floor 6W
Seasonal snacks and share
plates, cocktails, wine, and
beer, with terrace views

Relax

Lounge

The Marlene Hess and
James D. Zirin Lounge
Floor 1

Lounge

The Daniel and Jane Och Lounge
Floor 2

Lounge

The Louise Reinhardt Smith Gallery
Floor 3

Shop

Museum Store

Floors 1, 2, and 6
MoMA books, collection and
exhibition-related products,
and kids' items

MoMA Design Store

Design objects for the home,
tech products, personal
accessories, and MoMA-
exclusive items

44 West 53rd Street, across
from the main entrance

81 Spring Street, between
Crosby Street and Broadway

Info

moma.org/map

Plan
Mappa
地图
地圖
Mapa
안내도
地圖



moma.org/audio



WeChat

扫码关注MoMA公众号,
探索现代艺术



Plan Mappa 地图 地圖 Mapa 안내도 地圖

Display through
May 2020



Printed on 100% post-consumer-
waste recycled paper

MoMA

1



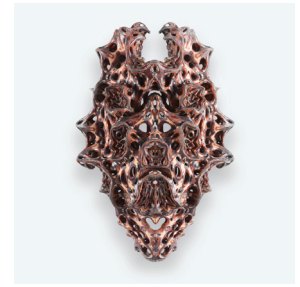
Fall 2019
1 North
Projects 110:
 Michael Armitage
 Oct 21, 2019–Jan 20, 2020



Fall 2019
1 South
Energy
 Oct 21, 2019–Jan 26, 2020

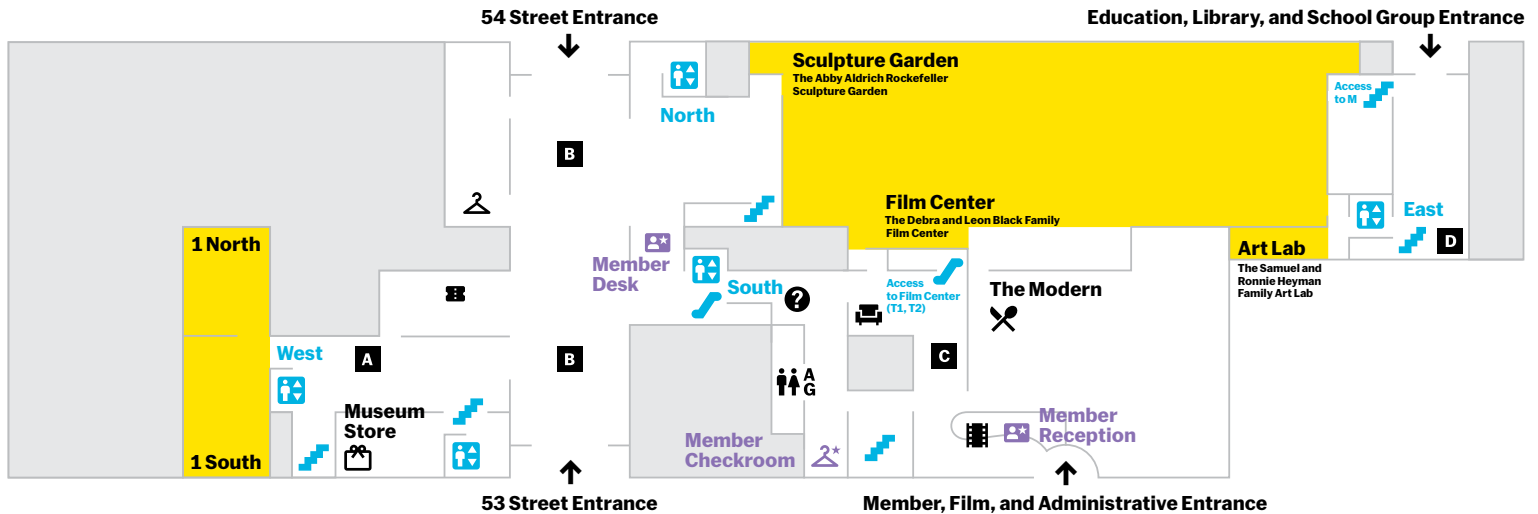


Fall 2019–Spring 2020
Sculpture Garden
A Century of Sculpture
 Oct 21, 2019–May 2020
 Pablo Picasso. *She-Goat*.
 1950 (cast 1952)



Spring 2020
1 North and South
Neri Oxman: Material Ecology
 Feb 22–May 25, 2020

All artworks from the collection of The Museum of Modern Art, New York, unless otherwise noted. Images, from left: Michael Armitage. *Seraph*, 2017. Oil on Lugubro bark cloth, 78 3/4 × 59 1/4" (200 × 150 cm). Private collection. © Michael Armitage. Photo © White Cube (George Darrell); Massoud Hassani. *Mine Kafon* wind-powered deminer, 2011. Bamboo and biodegradable plastics, 87 × 87 × 87" (221 × 221 × 221 cm). Gift of the Contemporary Arts Council of The Museum of Modern Art; Pablo Picasso. *She-Goat*, 1950 (cast 1952). Bronze, 46 3/4 × 56 3/4 × 28 1/4" (117.7 × 143.1 × 71.4 cm). Mrs. Simon Guggenheim Fund. © 2019 Estate of Pablo Picasso/Artists Rights Society (ARS), New York; Neri Oxman and The Mediated Matter Group. *Vespers*, 2018. Series 1, Mask 5, front view. Designed for the New Ancient Collection. Curated and 3-D printed by Stratasys. Photo: Yoram Resher



- Tickets
- Film Desk
- Store
- Restaurant
- Coffee
- Audio Desk

- Info Desk
- Checkroom
- Lounge
- Charging Station

- Member Desk and Reception
- Member Checkroom

- Wheelchair-accessible restrooms and baby changing stations are located on every floor.
- All-gender restrooms

Please note
 Works of art may be off view and galleries may be temporarily closed.

- Artist Commissions**
- A** Haim Steinbach
 - B** Philippe Parreno
 - C** Sol LeWitt
 - D** Goshka Macuga

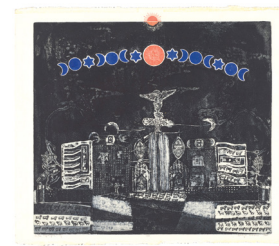
2



202
Jean-Michel Basquiat. *Glenn*.
1985



208
Catherine Opie. *Dyke*. 1993



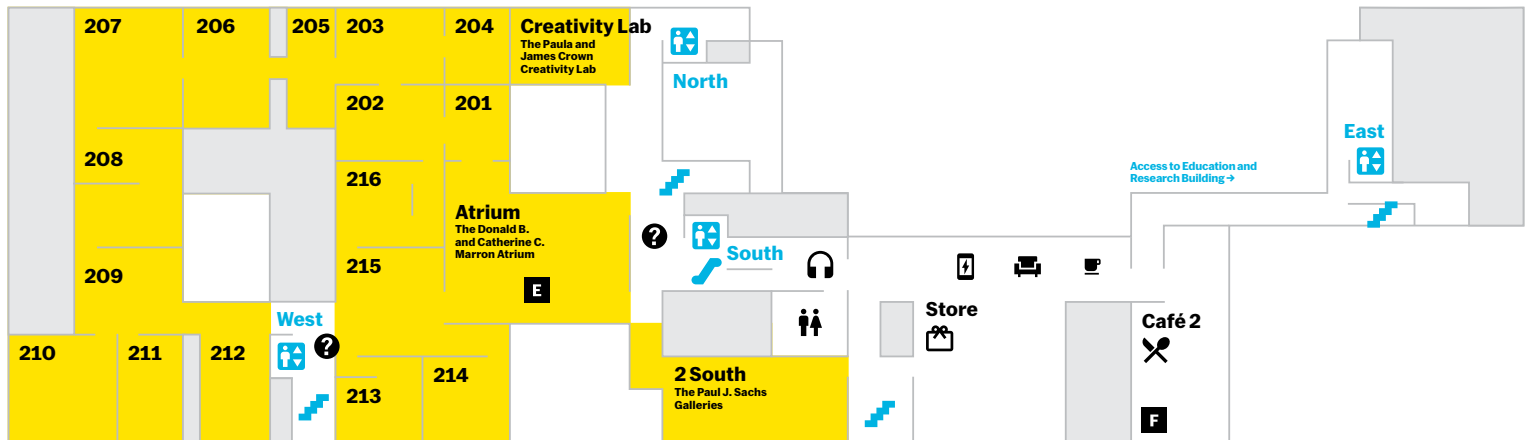
Fall 2019
2 South
Sachs Galleries
Betye Saar: The Legends of Black Girl's Window
Oct 21, 2019–Jan 4, 2020



Spring 2020
2 South
Sachs Galleries
Dorothea Lange: Words & Pictures
Feb 9–May 2, 2020

Images, from left: Jean-Michel Basquiat. *Glenn*. 1985. Acrylic, oilstick, and photocopy collage on canvas, 100 × 114" (254 × 289.5 cm.) Private collection. © 2019 Artists Rights Society (ARS), New York/ADAGP, Paris; Catherine Opie. *Dyke*. 1993. Chromogenic color print, 40 × 30" (101.6 × 76.2 cm). Committee on Photography Fund and gift of Agnes Gund. © 2019 Catherine Opie; Betye Saar. *Lo, The Mystique City*. 1965. Etching and aquatint with relief-printed found objects, image: 18 1/2 × 19 3/4" (47 × 50.4 cm). The Candace King Weir Endowment for Women Artists. © Betye Saar, courtesy of the artist and Roberts Projects, Los Angeles; Dorothea Lange. *Kern County, California*. 1938. Gelatin silver print, 12 1/4 × 12 1/2" (31.6 × 31.7 cm). Purchase

The David Geffen Wing 206–211



Collection 1970s–Present

- 201** Public Images
- 202** Downtown New York
- 203** Hardware/Software

- 204** Gretchen Bender's *Dumping Core*
- 205** Print, Fold, Send
- 206** Transfigurations
- 207** Before and After
Tiananmen
- 208** True Stories

- 209** Inner and Outer Space
- 210** Richard Serra's *Equal*
- 211** JODI's *My%Desktop*
- 212** Sheela Gowda's *Of All People*
- 213** Wu Tsang's *We hold where study*

- 214** Surface Tension
- 215** Worlds to Come
- 216** Building Citizens

- ## Artist Commissions
- E** Haegue Yang
 - F** Experimental Jetset

3



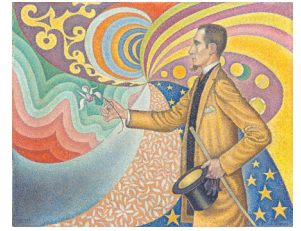
Fall 2019
3 South
Steichen Galleries
member: Pope.L., 1978–2001
Oct 21, 2019–Feb 1, 2020



Fall 2019–Spring 2020
3 North
Johnson Galleries
Taking a Thread for a Walk
Oct 21, 2019–Apr 2020

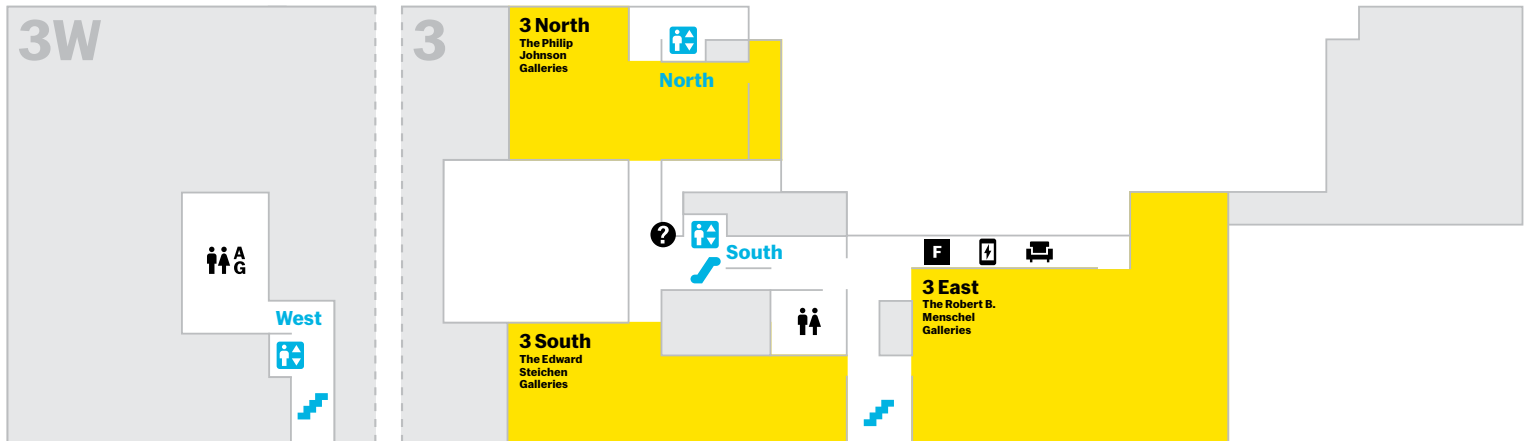


Fall 2019–Spring 2020
3 East
Menschel Galleries
Sur moderno: Journeys of Abstraction—The Patricia Phelps de Cisneros Gift
Oct 21, 2019–Mar 14, 2020



Spring 2020
3 South
Steichen Galleries
Félix Fénéon: The Anarchist and the Avant-Garde—From Signac to Matisse and Beyond
Mar 22–Jul 25, 2020

Images, from left: Pope.L. *How Much Is That Nigger in the Window a.k.a. Tompkins Square Crawl*. 1991. Inkjet print, 10 × 15" (25.4 × 38.1 cm). Acquired in part through the generosity of Jill and Peter Kraus, Anne and Joel S. Ehrenkrantz, The Contemporary Arts Council of The Museum of Modern Art, The Jill and Peter Kraus Media and Performance Acquisition Fund, and Jill and Peter Kraus in honor of Michael Lynne. © Pope.L., courtesy the artist; Aurèlia Muñoz. *Águila Beige (Brown Eagle)*. 1977. Macramé with hand-dyed sisal and jute yarn, 72 × 156 × 150" (182.9 × 396.2 × 381 cm). Committee on Architecture and Design Funds; Jesús Rafael Soto. *Doble transparencia (Double Transparency)*. 1956. Oil on plexiglass and wood with metal rods and bolts, 21 1/2 × 21 1/2 × 12 1/2" (55 × 55 × 32 cm). Gift of Patricia Phelps de Cisneros through the Latin American and Caribbean Fund in honor of Ana Teresa Arismendi. © 2019 Artists Rights Society (ARS), New York/ADAGP, Paris; Paul Signac. *Opus 217, Against the Enamel of a Background Rhythmic with Beats and Angles, Tones, and Tints, Portrait of M. Félix Fénéon in 1890*. 1890. Oil on canvas, 29 × 36 1/2" (73.5 × 92.5 cm). Gift of Mr. and Mrs. David Rockefeller. © 2019 Artists Rights Society (ARS), New York/ADAGP, Paris



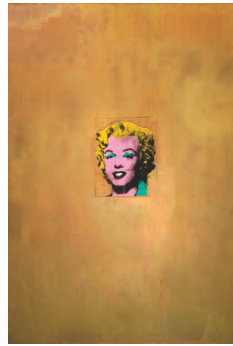
Artist Commissions

F Yoko Ono

4



401
Wilfredo Lam. *The Jungle*.
1943



412
Andy Warhol. *Gold
Marilyn Monroe*. 1962

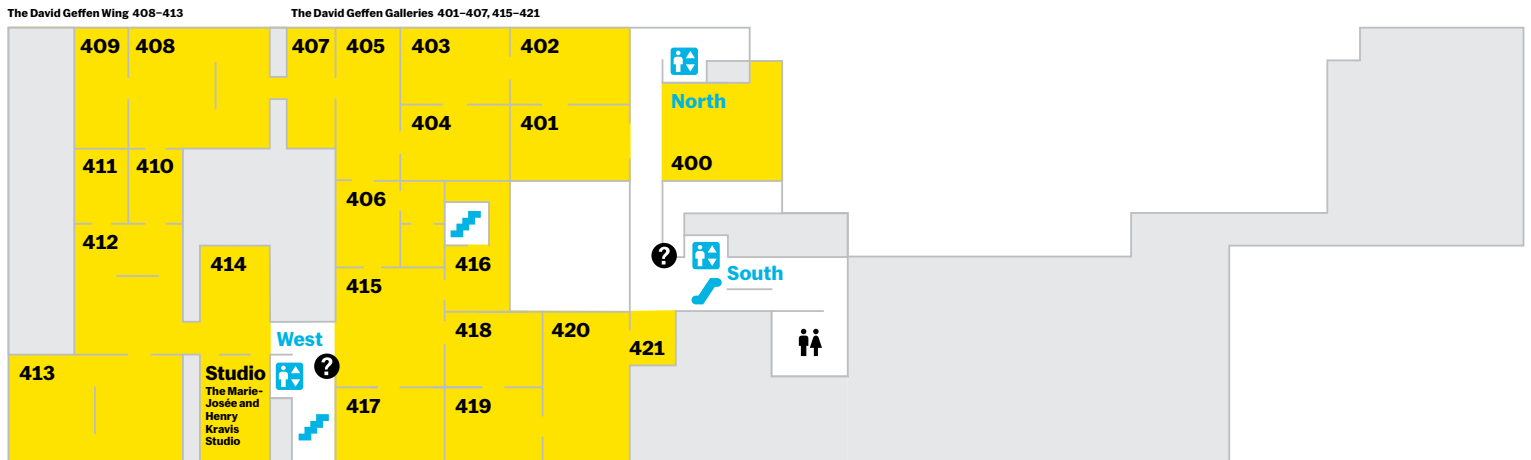


412
Yayoi Kusama. *Accumulation
No. 1*. 1962



Fall 2019
Kravis Studio
*David Tudor and Composers
Inside Electronics Inc.:
Rainforest V (variation 1)*
Oct 21, 2019–Jan 5, 2020

Images, from left: Wilfredo Lam. *The Jungle*. 1943. Gouache on paper mounted on canvas, 94 ¼ × 90 ½" (239.4 × 229.9 cm). Inter-American Fund. © 2019 Artists Rights Society (ARS), New York/ADAGP, Paris; Andy Warhol. *Gold Marilyn Monroe*. 1962. Silkscreen ink and acrylic on canvas, 6' 11 ¼" × 57" (211.4 × 144.7 cm). Gift of Philip Johnson. © 2019 Andy Warhol Foundation for the Visual Arts/Artists Rights Society (ARS), New York; Yayoi Kusama. *Accumulation No. 1*. 1962. Sewn stuffed fabric, paint, and chair fringe, 37 × 39 × 43" (94 × 99.1 × 109.2 cm). Gift of William B. Jaffe and Evelyn A. J. Hall (by exchange). © 2019 Yayoi Kusama; David Tudor. *Rainforest V (variation 1)*. 1973–2015. Twenty objects, sound, dimensions variable. Realized by Composers Inside Electronics, Inc. (John Driscoll, Phil Edelstein, and Matt Rogalsky). Committee on Media and Performance Art Funds. © 2019 David Tudor and Composers Inside Electronics Inc.



Collection 1940s–1970s

- | | | | | |
|---------------------------------|--|---|---|---|
| 400 New Monuments | 404 Planes of Color | 408 Stamp, Scavenge, Crush | 412 From Soup Cans to Flying Saucers | 418 Joan Jonas's <i>Mirage</i> |
| 401 Out of War | 405 Action Painting II | 409 Abstract Lens | 413 Breaking the Mold | 419 Four Photographers, Four Places |
| 402 In and Around Harlem | 406 In and Out of Paris; Henri Matisse's <i>Swimming Pool</i> | 410 At the Border of Art and Life | 414 City as Stage | 420 War Within, War Without |
| 403 Action Painting I | 407 Frank O'Hara, Lunchtime Poet | 411 Andy Warhol's <i>Kiss, Blow Job, and Sleep</i> | 415 Idea Art | 421 Rosemarie Trockel's <i>Book Drafts</i> |
| | | | 416 The Art of the Multiple | |
| | | | 417 Architecture Systems | |

5



500
Constantin Brancusi. *Mlle Pogany*. 1913



501
Vincent van Gogh. *The Starry Night*. 1889



511
Berenice Abbott. *Rockefeller Center*. c. 1936

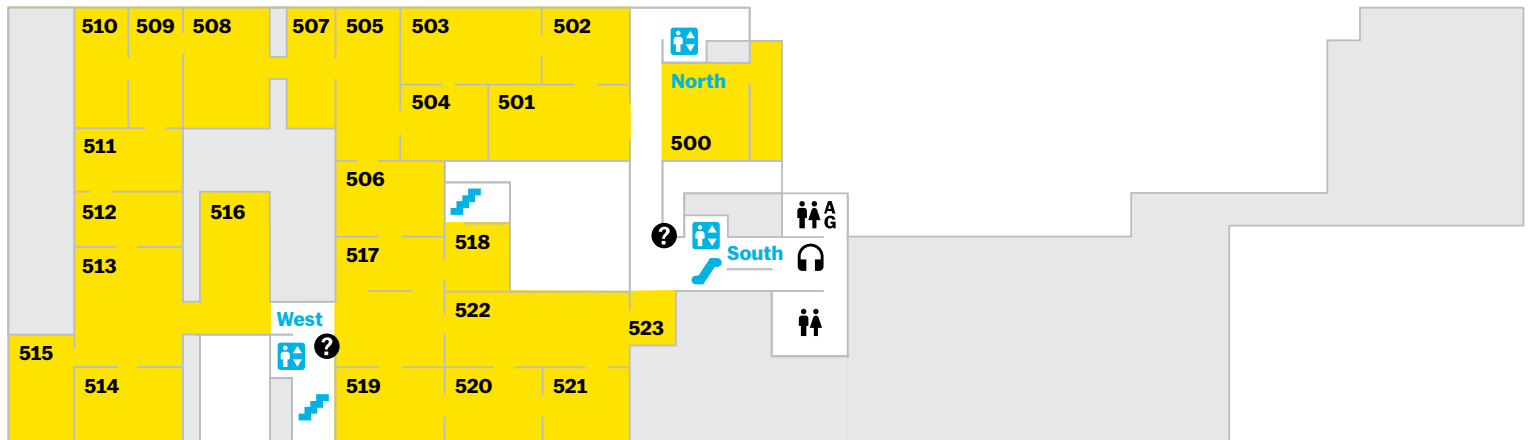


517
Frida Kahlo. *Self-Portrait with Cropped Hair*. 1940

Images, from left: Constantin Brancusi. *Mlle Pogany*. Version I, 1913 (after a marble of 1912). Bronze with black patina on limestone base, 17 ¼ × 8 ½ × 12 ½" (43.8 × 21.5 × 31.7 cm) and 5 ¼ × 6 ½ × 7 ¾" (14.6 × 15.6 × 18.7 cm). Acquired through the Lillie P. Bliss Bequest (by exchange). © Succession Brancusi - All rights reserved (ARS) 2019; Vincent van Gogh. *The Starry Night*. 1889. Oil on canvas, 29 × 36 ¼" (73.7 × 92.1 cm). Acquired through the Lillie P. Bliss Bequest (by exchange); Berenice Abbott. *Rockefeller Center*. c. 1936. Gelatin silver print, 9 ½ × 7 ½" (24.1 × 19 cm). Anonymous gift. © 2019 Estate of Berenice Abbott; Frida Kahlo. *Self-Portrait with Cropped Hair*. 1940. Oil on canvas, 15 ¼ × 11" (40 × 27.9 cm). Gift of Edgar Kaufmann, Jr. © 2019 Banco de México Diego Rivera Frida Kahlo Museums Trust, Mexico, D.F./Artists Rights Society (ARS), New York

The David Geffen Wing 508-515

The Alfred H. Barr, Jr. Galleries 501-507, 517-523



Collection 1880s-1940s

500 Constantin Brancusi
501 19th-Century Innovators
502 Early Photography
and Film

503 Around *Les Demoiselles
d'Avignon*
504 New Expression in
Germany and Austria
505 Circa 1913
506 Henri Matisse
507 Artists' Books and Prints
in Russia

508 Readymade in Paris and
New York
509 Florine Stettheimer and
Company
510 Machines, Mannequins,
and Monsters
511 The Vertical City

512 Abstraction and Utopia
513 Design for Modern Life
514 Paris 1920s
515 Claude Monet's *Water Lilies*
516 Artist's Choice: Amy Sillman
517 Surrealist Objects
518 A Surrealist Art History

519 Architecture for Modern Art
520 Picturing America
521 *Masters of Popular Painting*
522 Responding to War
523 British Prints from the
Machine Age

6



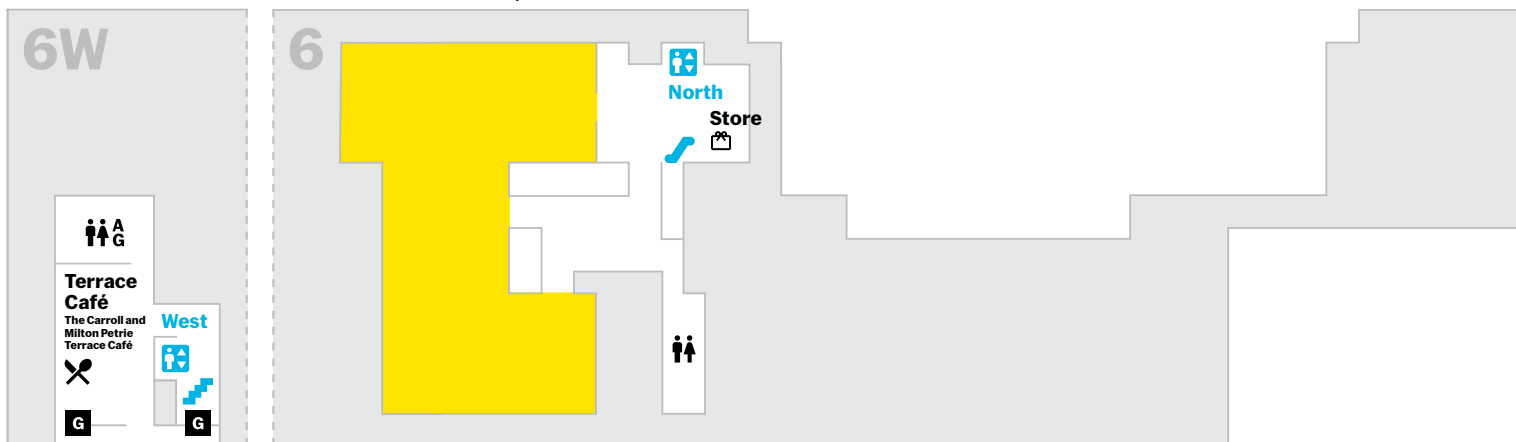
Fall 2019
Surrounds: 11 Installations
Oct 21, 2019–Jan 4, 2020



Spring 2020
Judd
Mar 1–Jul 11, 2020

Images, from left: Dayanita Singh. *Museum of Chance*, 2013. 162 pigmented inkjet prints and teak structures, variable dimensions. Acquired with support from The Contemporary Arts Council of The Museum of Modern Art, The Modern Women's Fund, and Committee on Photography Fund.
© 2019 Dayanita Singh; Donald Judd. *Untitled*, 1991. Enameled aluminum, 59" × 24' 7 1/4" × 65" (150 × 750 × 165 cm). Bequest of Richard S. Zeisler and gift of Abby Aldrich Rockefeller (both by exchange) and gift of Kathy Fuld, Agnes Gund, Patricia Cisneros, Doris Fisher, Mimi Haas, Marie-Josée and Henry R. Kravis, and Emily Spiegel. © 2019 Judd Foundation/Artists Rights Society (ARS), New York

The Steven and Alexandra Cohen Center for Special Exhibitions



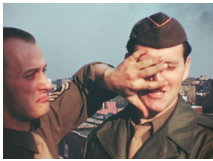
Artist Commissions

G Kerstin Brätsch

Access to 6W using west
elevator and stair

Lower Levels

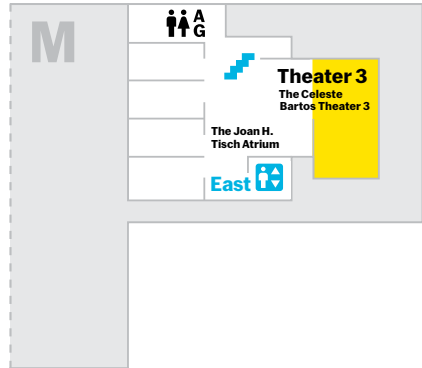
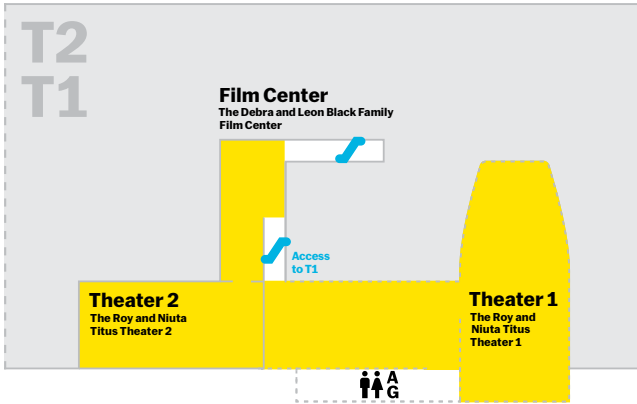
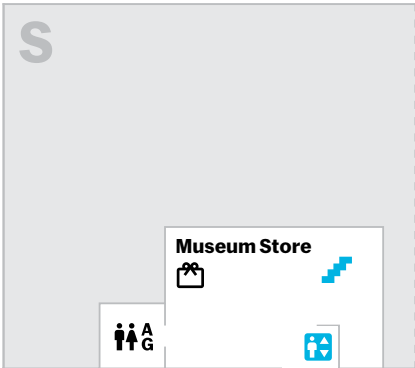
Accessible by Floor 1



Fall 2019–Spring 2020

Film Center

Private Lives Public Spaces
Oct 21, 2019–Jul 5, 2020
6th Avenue - Subway - Post.
1942–44. USA. Directed by
Charles L. Turner



Get fresh perspectives on artworks. Borrow a free device on Floors 1, 2 or 5, or visit moma.org/audio.

Gagnez de nouvelles perspectives sur les œuvres d'art. Empruntez gratuitement un appareil au niveau 1, 2 ou 5, ou visitez moma.org/audio.

Scopri punti di vista innovativi sulle opere d'arte. Preleva un dispositivo audio gratuito ai Piani 1, 2 o 5, oppure visita moma.org/audio.

Obtenga nuevas perspectivas sobre las obras de arte. Pida prestado un dispositivo gratuito en las plantas 1, 2 o 5, o visite moma.org/audio.

从全新视角了解艺术作品。在 1、2 或 5 层免费借用设备或访问 moma.org/audio。

全性别洗手间位于 1 楼、3W 楼、5 楼和 T1 馆。

Unisex-Toiletten befinden sich in den Etagen 1, 3W, 5 und T1.

남녀공용 화장실은 1층, 3W층, 5층 및 T1에 있습니다.

ユニセックス用トイレは1階、3階W、5階、T1にあります。

Os banheiros para todos os gêneros estão localizados nos Pisos 1, 3W, 5 e T1.



Holen Sie sich neue Perspektiven auf Kunstwerke. Leihen Sie sich ein kostenloses Gerät in den Etagen 1, 2 oder 5 aus oder besuchen Sie moma.org/audio.

미술 작품에 대한 새로운 관점을 경험하세요. 1, 2, 5층에서 무료 기기를 대여하시거나, moma.org/audio를 방문해주세요.

アートワークを新しい視点から捉えましょう。1階、2階または5階で無料デバイスを借りるか、moma.org/audioでお聞きたいだけです。

Obtenha novas perspectivas sobre as obras de arte. Pegue emprestado um dispositivo no Piso 1, 2 ou 5 ou visite moma.org/audio.

See a film today

Same-day film tickets are free with MoMA admission. To see what's playing, check program screens or visit moma.org/film.

All theaters and classrooms are equipped with hearing loops.



Baby strollers are welcome. Please note, they are not permitted on escalators.

Les poussettes sont les bienvenues. Attention, elles ne sont pas autorisées sur les escaliers roulants.

È accettato l'uso di passeggini per i bambini. Ma non ne è consentito l'uso sulle scale mobili.

Los cochecitos de bebé son bienvenidos. Tenga en cuenta que no está permitido su uso en las escaleras mecánicas.

欢迎使用婴儿车。请注意，不要在自动扶梯上使用婴儿车。

歡迎嬰兒車入館。請不要在手扶梯上使用嬰兒車。

Kinderwagen sind willkommen. Bitte beachten Sie jedoch, dass sie auf Rolltreppen nicht gestattet sind.

유모차 이용이 가능합니다. 에스컬레이터에서는 유모차를 사용할 수 없습니다.

ベビーカーでご入場いただけます。エスカレーターのご利用はご遠慮ください。

Carrinhos de bebé são permitidos. Porém, não são permitidos nas escadas rolantes.



MoMA is wheelchair accessible. Wheelchairs are available in the checkroom.

Le MoMA est accessible aux fauteuils roulants. Des fauteuils roulants sont mis à disposition au vestiaire.

MoMA è accessibile ai visitatori su sedia a rotelle. Sedia a rotelle sono disponibili presso il guardaroba.

El MoMA es accesible para sillas de ruedas. Hay sillas de ruedas disponibles en el guardarropa.

现代艺术博物馆有无障碍通道。轮椅可在寄存处借用。

MoMA 是無障礙空間。輪椅可在衣物寄放處取用。

MoMA ist rollstuhlgerecht. Rollstühle können an der Garderobe ausgeliehen werden.

MoMA는 휠체어 출입이 가능합니다. 휠체어는 물품보관소에서 받으실 수 있습니다.

MoMAでは、車椅子でご入場いただけます。車椅子はクロークにて貸し出しています。

O MoMA tem acesso para cadeira de rodas. Cadeiras de rodas estão disponíveis no guarda-volumes.

More to explore



Sculpture Garden

The Abby Aldrich Rockefeller Sculpture Garden

Floor 1

Enjoy works by Pablo Picasso and Henri Matisse, a 36-foot-tall rose by Isa Genzken, and changing installations.

Artist Commissions

Discover new and site-specific works in various locations throughout the Museum, by artists including Yoko Ono, Sol LeWitt, and Experimental Jetset. See floor plans for location details.

Studio

The Marie-Josée and Henry Kravis Studio

Floor 4

Visit this state-of-the-art space presenting live and experimental programming in the heart of the collection galleries. To see what's on, visit moma.org/studio.

Creativity Lab

The Paula and James Crown Creativity Lab

Floor 2

Connect with art through participatory experiences. Drop in to experiment with materials, create something new, and join conversations and workshops.

Art Lab

The Samuel and Ronnie Heyman Family Art Lab

Cullman Education and Research Building, access via Floor 2

Experiment, create, and play in this drop-in, interactive space for families with kids of all ages. Find family activity guides here and at any information desk.

Visit MoMA PS1

Experience innovative contemporary art in a former public school building, just 15 minutes away on the E or M train. Visit for free within 14 days of your MoMA admission purchase.



**22-25 Jackson Avenue
Long Island City, NY 11101
(718) 784-2084**

**Open Thursday–Monday,
12:00–6:00 p.m.**




**Closed Thanksgiving,
Christmas, and New Year's Day**

Explore art and ideas

Magazine, our new online publication, shares passionate perspectives on art and ideas that are shaping culture today. Read, watch, and listen at momagazine.org.

Get new perspectives and behind-the-scenes insight from curators and special guests with original videos on our YouTube channel, at momayoutube.org.

See your world in new ways through art—join a community of learners unlike any other with MoMA's free massive open online courses (MOOCs) on Coursera, at momacoursera.org.

 @theMuseumofModernArt
 MuseumofModernArt
 @MuseumModernArt

Become a member

Enjoyed your visit? Bring your admission ticket to the Member Desk to receive \$25 off a new membership and get free admission, discounted guest tickets, free films, and member-only hours all year long. Learn more at moma.org/membership.



Member Previews

Experience all major exhibitions before they open.

Member Early Access

Daily, 9:30–10:00 a.m.

Member After Hours

Enjoy the galleries after the Museum has closed to the public.

Café and Store Discounts

Enjoy 10% off every day at MoMA's cafés and stores, free shipping, and 20% off during Member Shopping Days.

Member Entrance and Checkroom

Avoid the lines and easily access the Museum whenever you visit.

 **BANK OF AMERICA**

Opening Partner

 **Hyundai Card**

Media and Performance at MoMA is made possible by Hyundai Card.

 **Allianz**

Allianz is MoMA's proud partner for design and innovation.



Volkswagen of America is proud to be MoMA's lead partner of education.



Free public admission every Friday night is made possible by UNI QLO.

 **IΣN/SNF** ΙΔΡΥΜΑ ΣΤΑΥΡΟΣ ΝΙΑΡΧΟΣ STAVROS NIARCHOS FOUNDATION

Access and Community Programs are supported by the Stavros Niarchos Foundation (SNF).

 **Bloomberg Philanthropies**

MoMA Audio is supported by Bloomberg Philanthropies.